

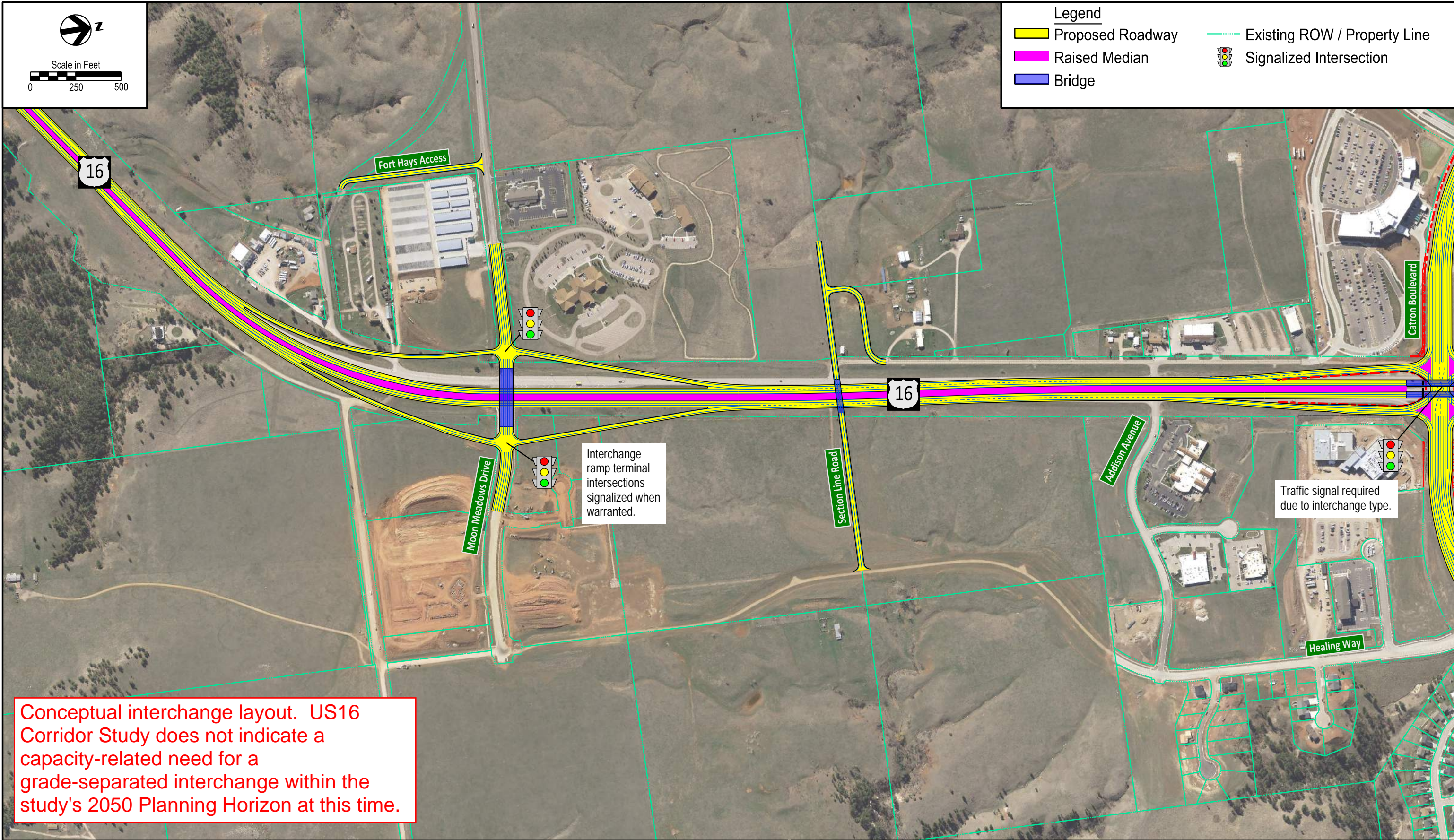


Scale in Feet



Legend

- Proposed Roadway
- Raised Median
- Bridge
- Existing ROW / Property Line
- Signalized Intersection



Conceptual interchange layout. US16 Corridor Study does not indicate a capacity-related need for a grade-separated interchange within the study's 2050 Planning Horizon at this time.

Moon Meadows Interchange
Scenario 1

Concepts Carried Forward on Sheet
Corridor: B (B-1 and B-2 applicable)
Intersections: MMD Interchange 1; FH-1



US16 Urban Area - Moon Meadows Drive Interchange
Scenario 1: Diamond Interchange
US16 Corridor Study

Figure

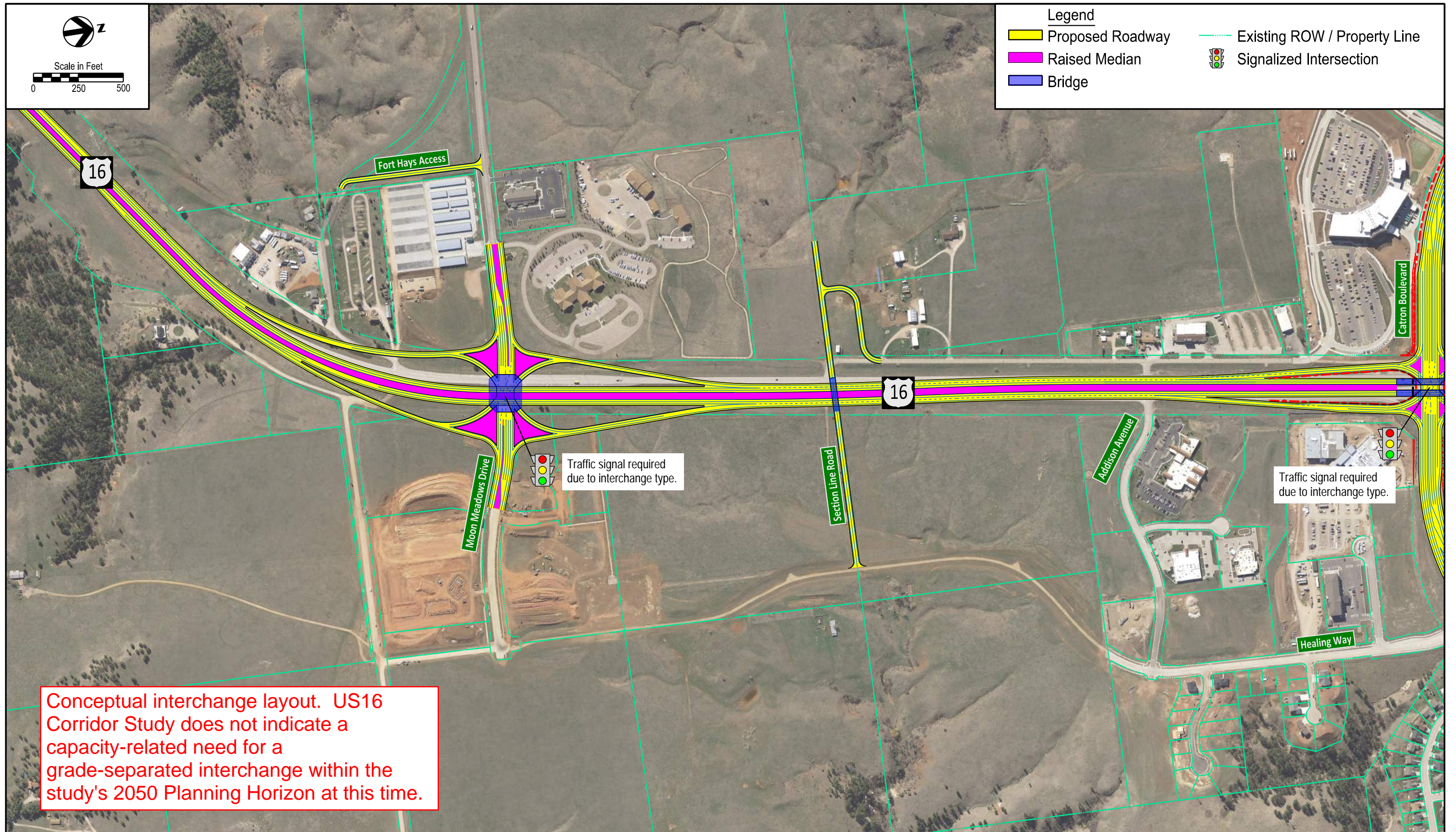
Rapid City, SD



Scale in Feet
0 250 500

Legend

- Proposed Roadway
- Raised Median
- Bridge
- Existing ROW / Property Line
- Signalized Intersection



Conceptual interchange layout. US16 Corridor Study does not indicate a capacity-related need for a grade-separated interchange within the study's 2050 Planning Horizon at this time.

Moon Meadows Interchange
Scenario 2

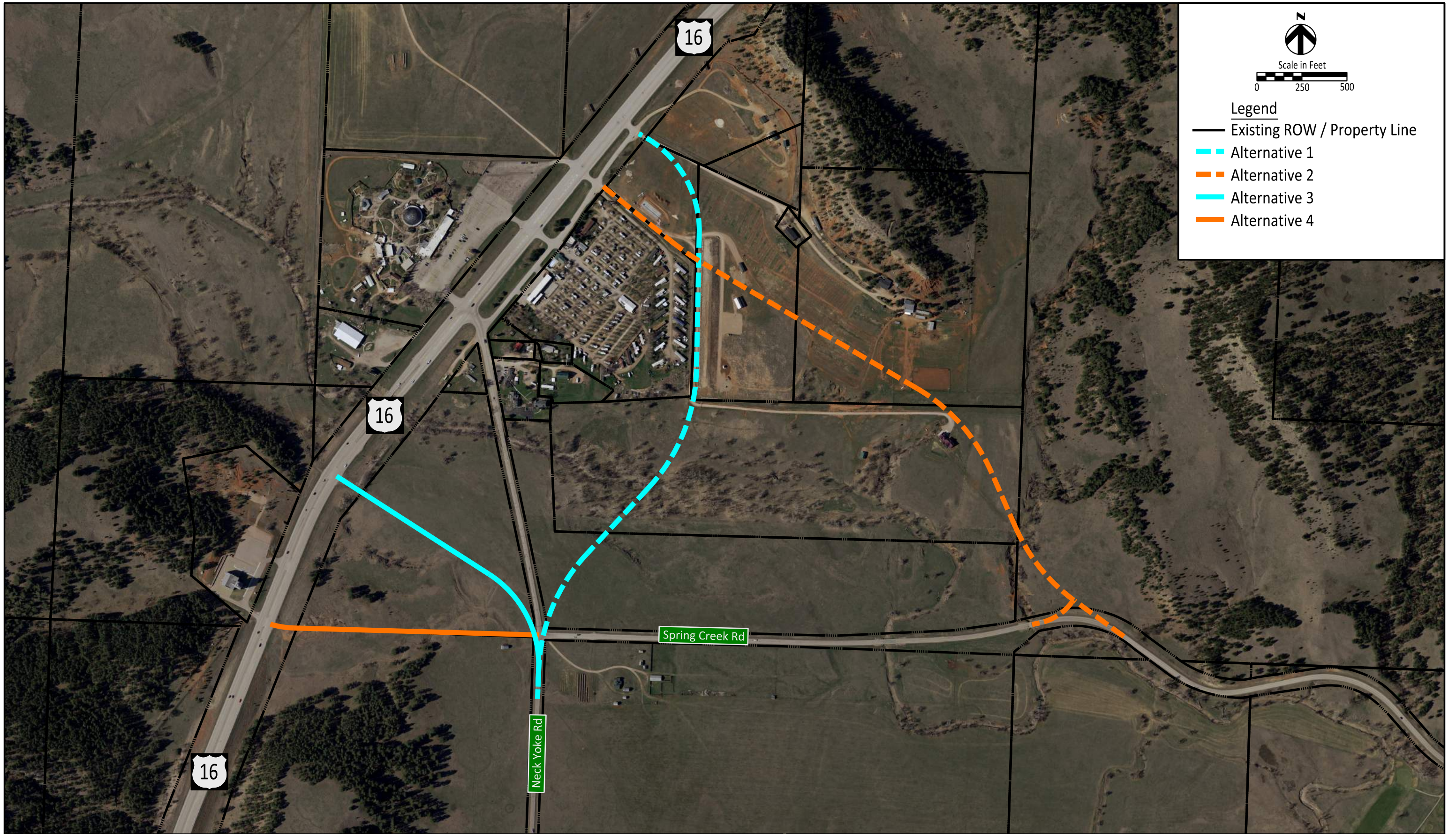
Concepts Carried Forward on Sheet
Corridor: B (B-1 and B-2 applicable)
Intersections: MMD Interchange 2; FH-1



US16 Urban Area - Moon Meadows Drive Interchange
Scenario 2: Single Point Interchange
US16 Corridor Study

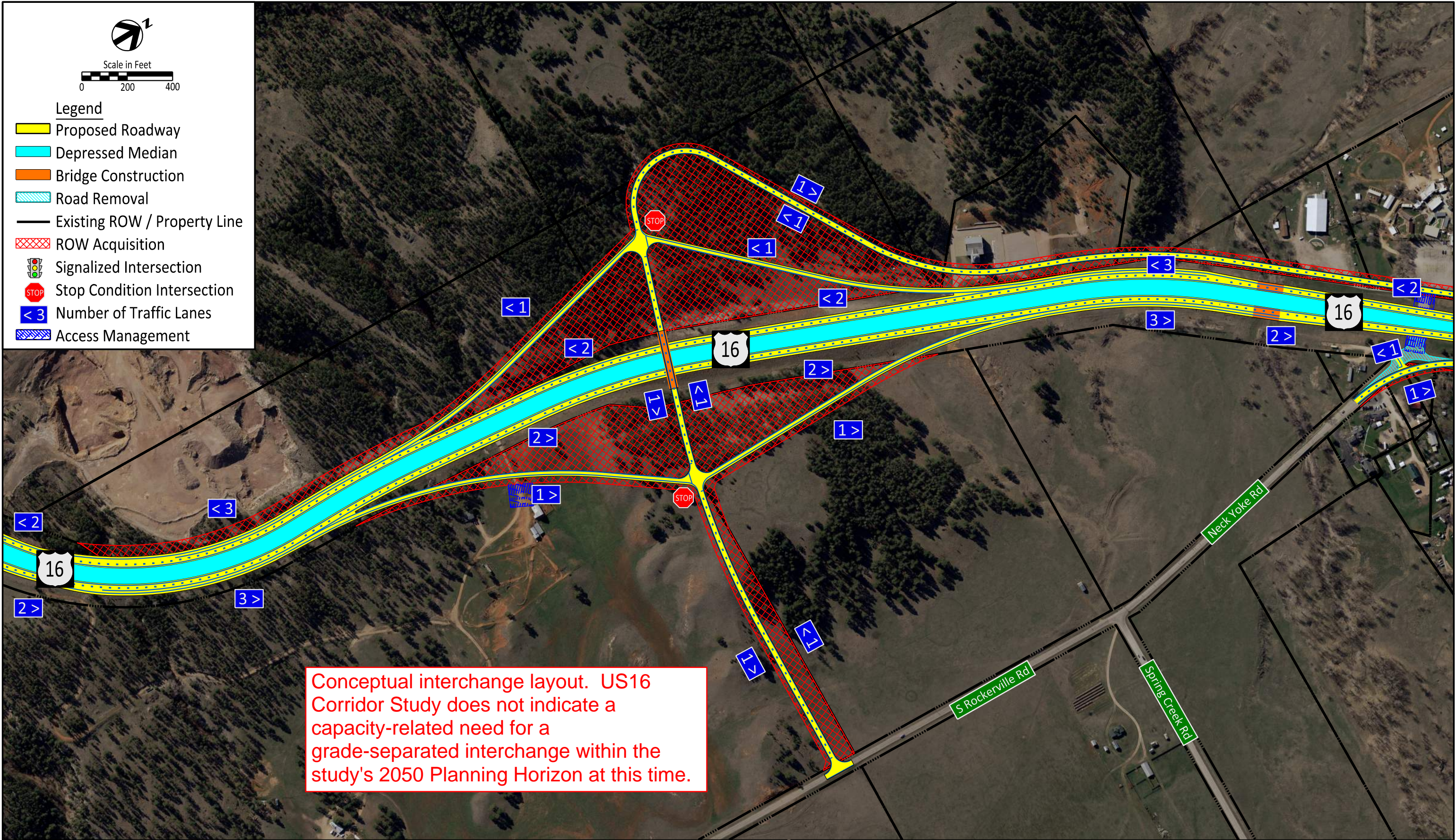
Figure

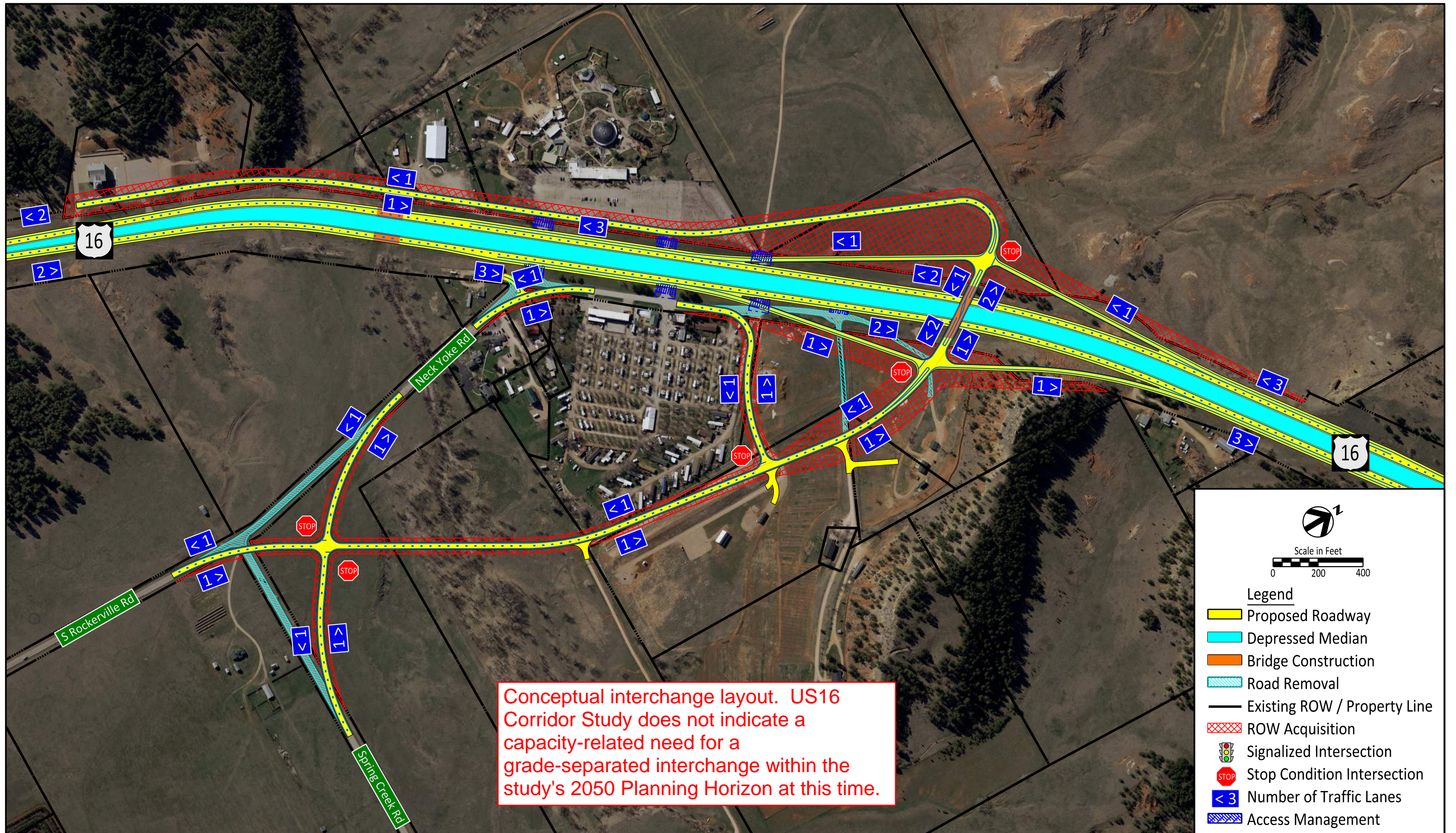
Rapid City, SD



Neck Yoke Road
Realignment Options
US16 Corridor Study

Figure
1





Conceptual interchange layout. US16 Corridor Study does not indicate a capacity-related need for a grade-separated interchange within the study's 2050 Planning Horizon at this time.