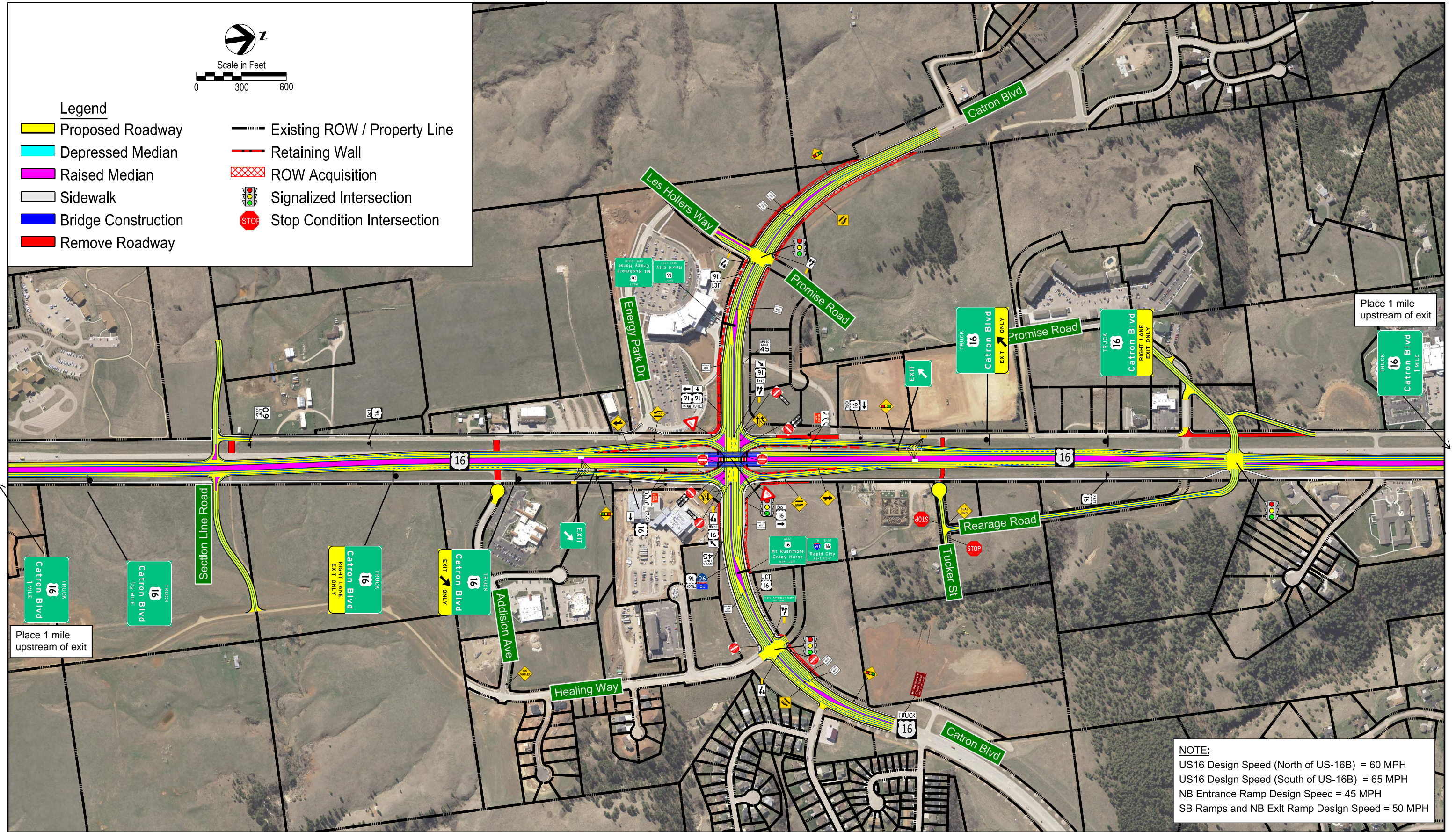
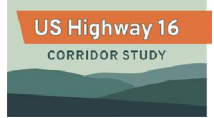


- Legend**
- Proposed Roadway
  - Depressed Median
  - Raised Median
  - Sidewalk
  - Bridge Construction
  - Remove Roadway
  - Existing ROW / Property Line
  - Retaining Wall
  - ROW Acquisition
  - Signalized Intersection
  - STOP Stop Condition Intersection



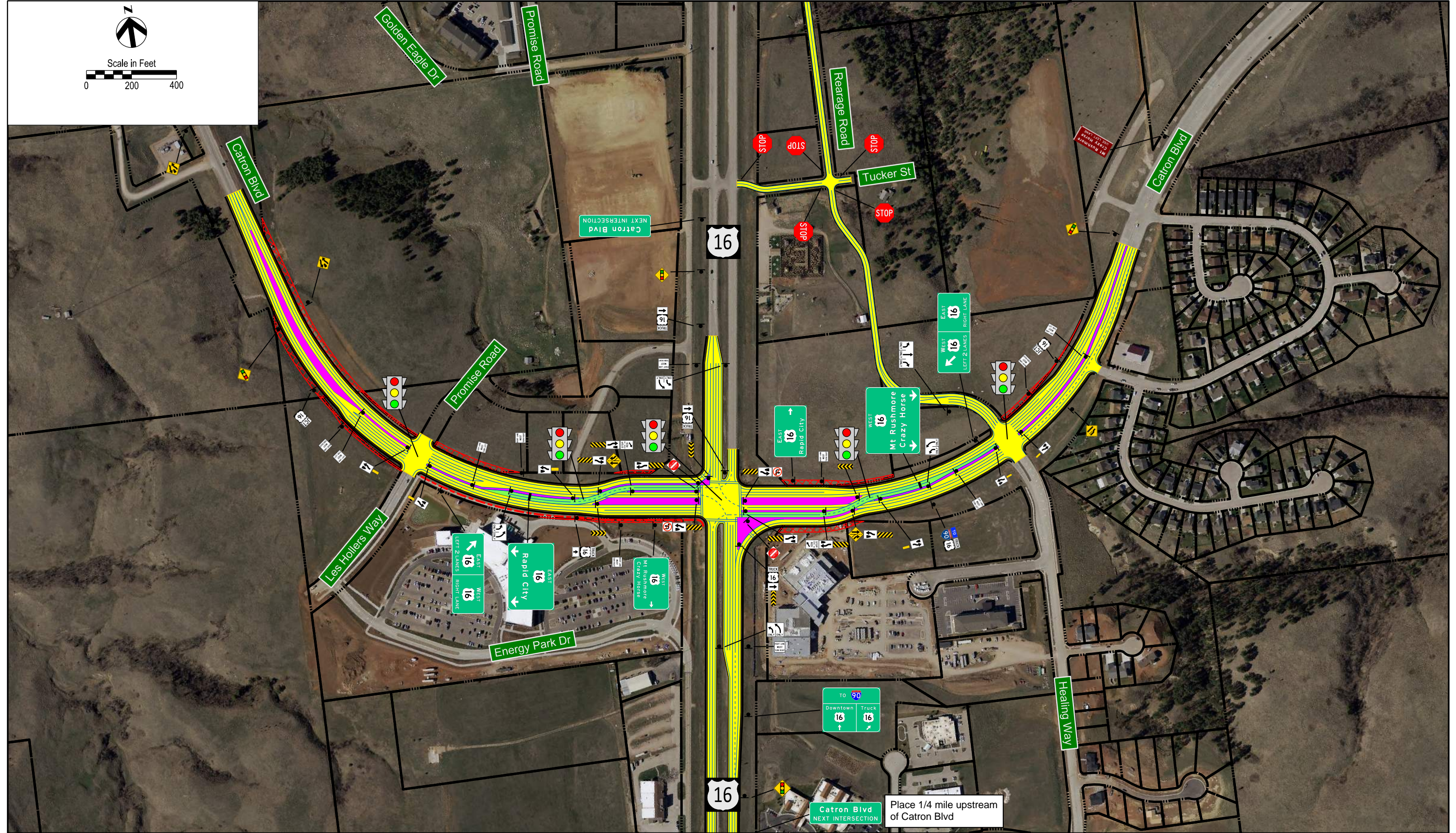
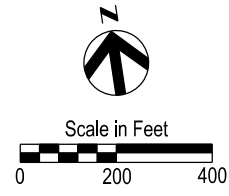
**NOTE:**  
 US16 Design Speed (North of US-16B) = 60 MPH  
 US16 Design Speed (South of US-16B) = 65 MPH  
 NB Entrance Ramp Design Speed = 45 MPH  
 SB Ramps and NB Exit Ramp Design Speed = 50 MPH



Recommended Build Option Signing Plan  
 SPI 1.1a with US16 Corridor Elements  
 US16 Corridor Study

Figure

Rapid City, SD



Displaced Left Turn Signage Layout  
 US 16 & US 16-B/Catron Boulevard  
 US16 Corridor Study

Option Shown

2.1a

Rapid City, SD