



Scale in Feet
0 250 500

- Legend**
- Proposed Roadway
 - Depressed Median
 - Raised Median
 - Sidewalk
 - Bridge Construction
 - Remove Roadway
 - Existing ROW / Property Line
 - Retaining Wall
 - ROW Acquisition
 - Signalized Intersection
 - STOP

 Stop Condition Intersection

US16/US16B/Catron Boulevard Intersection Consultant Recommendation
Project Recommendation: Single Point Interchange (SPI)

US16/Promise Road Intersection
- Intersection TYPE still 'to be determined' - See Corridor Scenarios (shown as traditional, full access intersection for illustrative purposes).
- Preliminary geometric recommendation to shift northward with Project to provide increased separation between SPI ramps and Promise Road.

US16/Addison Avenue Intersection
- Closed due to conflict with SPI ramps.
- Maintain existing US16 service road connections to:
- Les Hollers Way (via Energy Park Drive) and
- Section Line Road (via reconstructed intersection).
- Maintain existing east connection to Healing Way.

US16/Tucker Street Intersection
- Closed due to conflict with SPI ramps.
- Construct rearage road to Promise Road intersection.
- Potential future connection to Healing Way.

US16/Section Line Road Intersection Consultant Recommendations
Project Recommendation: Right-in Right-out (RIRO) Intersection
Long-range* Planning Recommendation: Section Line Road Overpass
* Need not anticipated within study's Year 2050 Planning Horizon. See considerations for when overpass might be constructed.

NOTE:
US16 Design Speed (North of US-16B) = 60 MPH
US16 Design Speed (South of US-16B) = 65 MPH
NB Entrance Ramp Design Speed = 45 MPH
SB Ramps and NB Exit Ramp Design Speed = 50 MPH

Build Option:
SPI 1.1a



US16/US16B/Catron Boulevard Intersection Consultant Recommendations
Single Point Interchange (SPI) Build Option 1.1a
US16 Corridor Study
Rapid City, SD

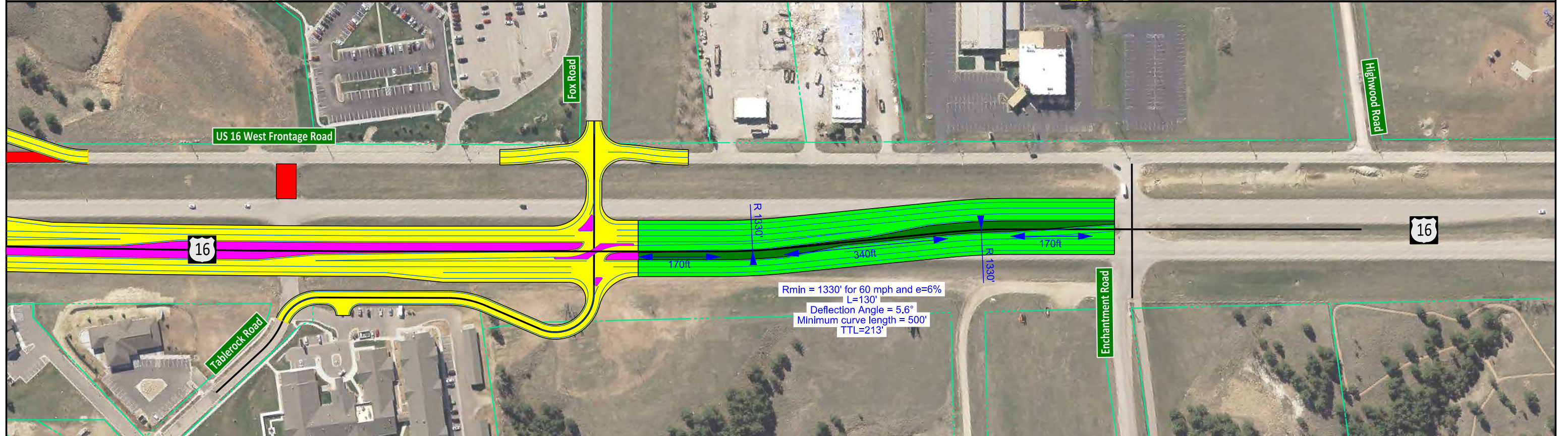
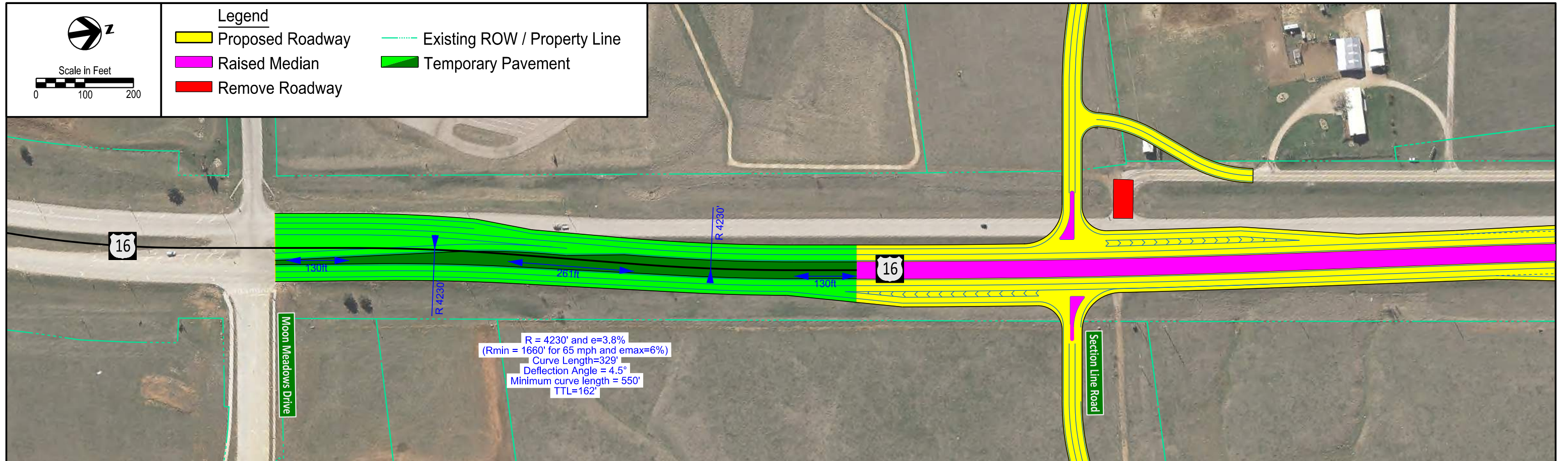
Figure



Scale in Feet
0 100 200

Legend

- Proposed Roadway
- Raised Median
- Remove Roadway
- Existing ROW / Property Line
- Temporary Pavement



Phasing Between Interchange and Corridor Projects
Moon Meadows to Section Line Road
US16 Corridor Study

Figure

Rapid City, SD