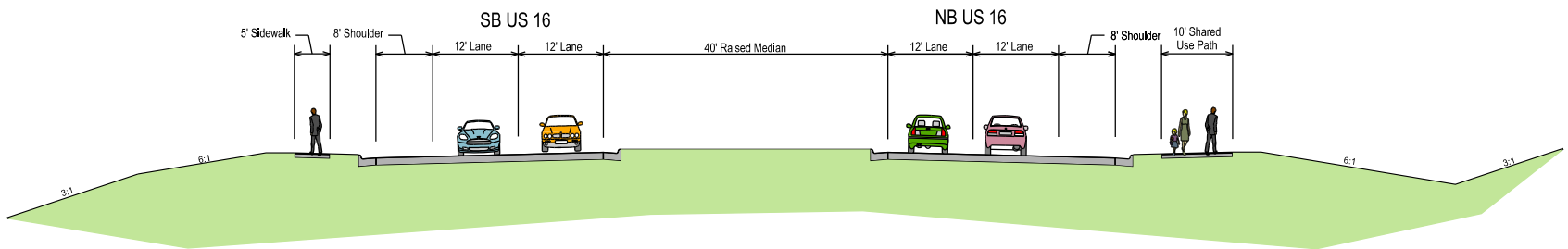


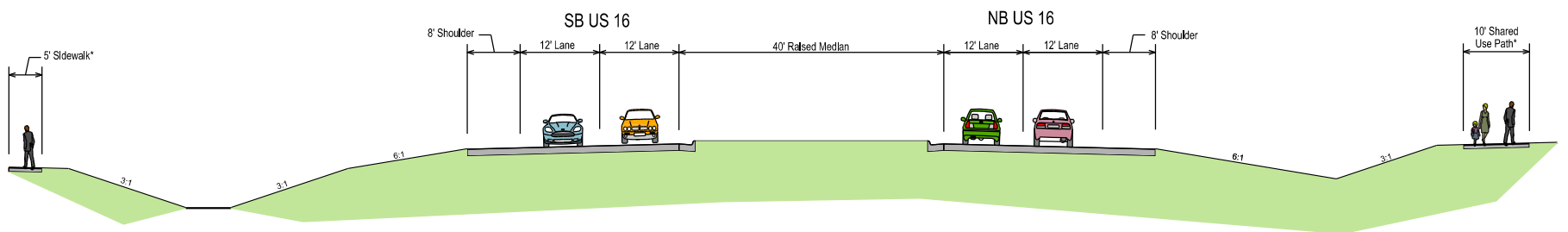
EXISTING 4-LANE DIVIDED WITH 60' DEPRESSED MEDIAN (RURAL)

LOOKING NORTH



4-LANE DIVIDED WITH 40' RAISED MEDIAN (URBAN)

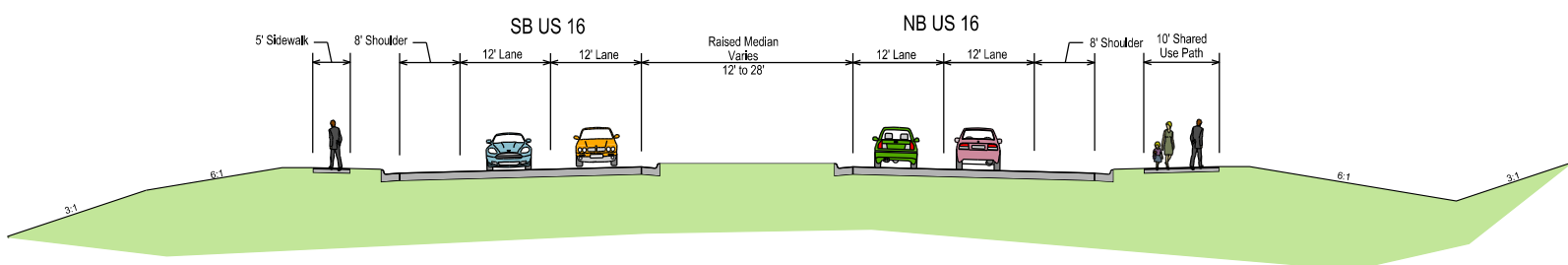
LOOKING NORTH



4-LANE DIVIDED WITH 40' RAISED MEDIAN (SUBURBAN)

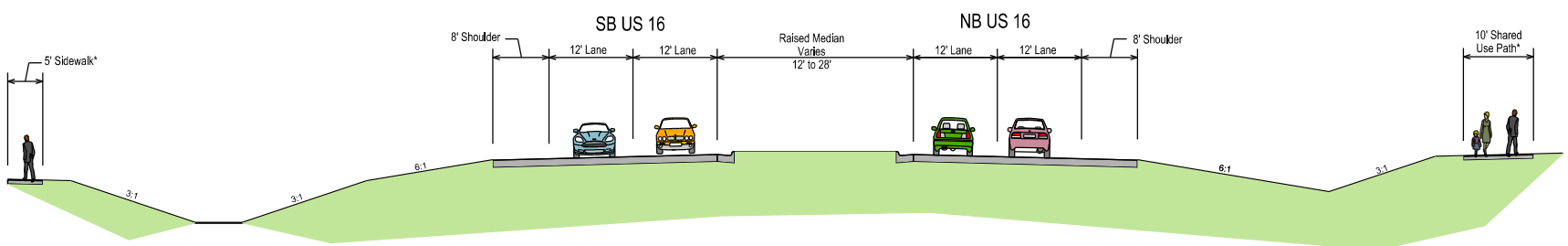
LOOKING NORTH

\*Sidewalk and Shared Use Path location varies greatly throughout the corridor



4-LANE DIVIDED WITH VARIABLE (12' TO 28') RAISED MEDIAN (URBAN)

LOOKING NORTH



4-LANE DIVIDED WITH VARIABLE (12' TO 28') RAISED MEDIAN (SUBURBAN)

LOOKING NORTH

\*Sidewalk and Shared Use Path location varies greatly throughout the corridor





Scale in Feet  
0 225 450

Legend

- Proposed Roadway
- Raised Median
- Remove Roadway
- Existing ROW / Property Line
- Signalized Intersection (When Warranted)

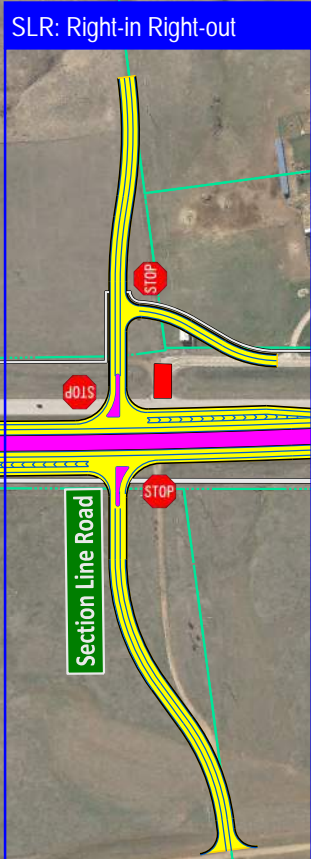
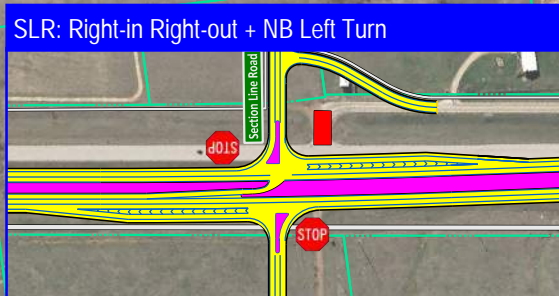
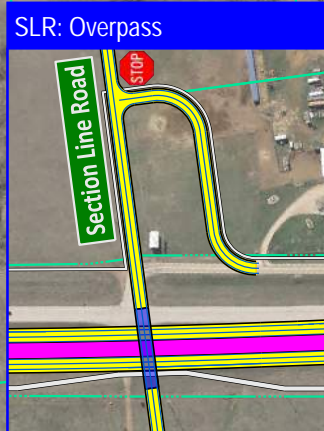
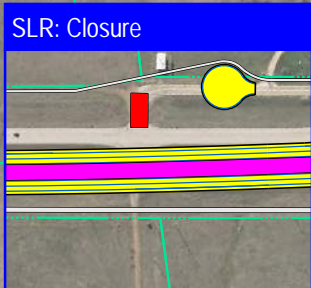
- US16/Moon Meadows Drive (MMD) Intersection Options
  - US16/Fort Hays Drive (Fort Hays) Intersection Options
  - US16/Section Line Road (SLR) Intersection Options
- Refer to US16/US16B/Catron Boulevard Intersection Sub-Area for discussion of SPI consultant recommendation.

Fort Hays Access road is applicable to all access options.

Fort Hays Access  
Moon Meadows Drive

MMD: Full Access Intersection - Signalize when Warranted

Fort Hays: Right-in Right-out



Sidewalk

Shared-use Path

Fort Hays: 3/4 Access

Fort Hays: Closure

Moon Meadows Drive

Section Line Road

Addison Avenue

Healing Way

Catron Boulevard

Signalized at Opening

US16 Urban (South)  
**Scenario 1**

Concepts Carried Forward  
Corridor: B (40' raised median) shifted east  
Intersections: MMD-1, FH-1-3 SLR-1-4



US16 Corridor Urban Area - South of US16B/Catron Boulevard  
Scenario 1: 4-Lane Divided (Shifted East) with Intersection Improvements  
US16 Corridor Study

Figure

Rapid City, SD



Scale in Feet  
0 225 450

Legend

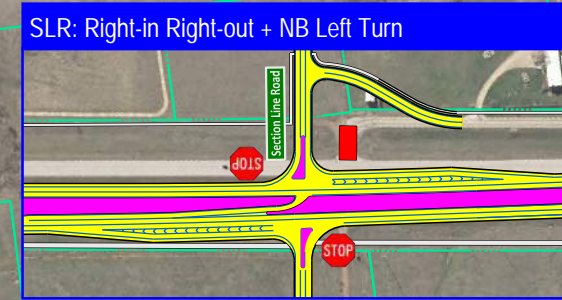
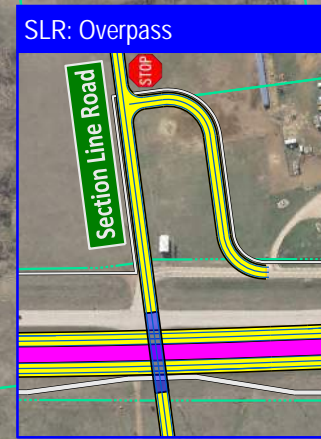
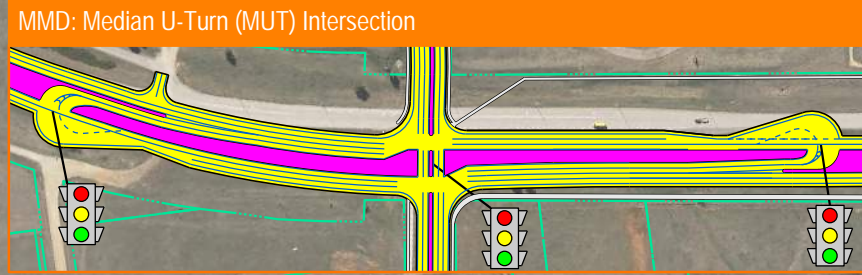
- Proposed Roadway
- Raised Median
- Remove Roadway
- Existing ROW / Property Line
- Signalized Intersection (When Warranted)

US16 & Moon Meadows Drive (MMD) Intersection Options

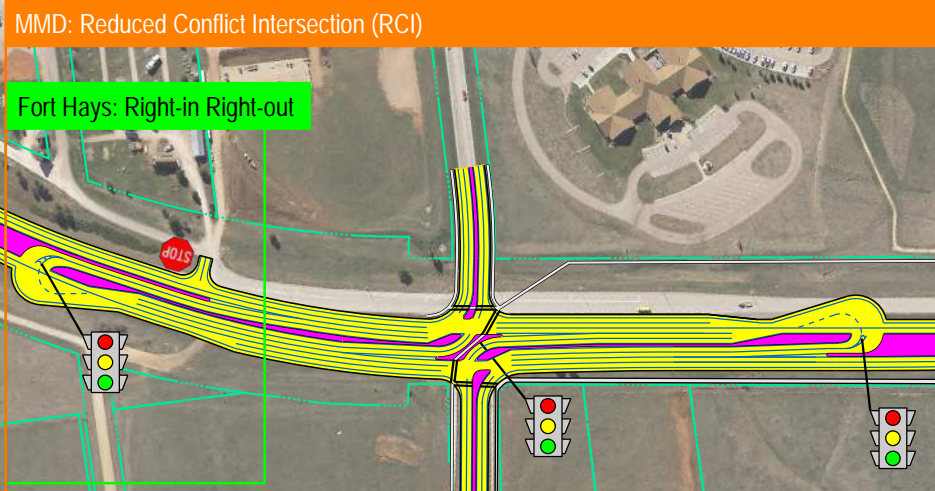
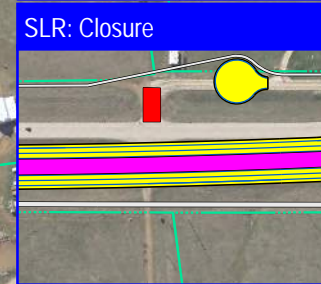
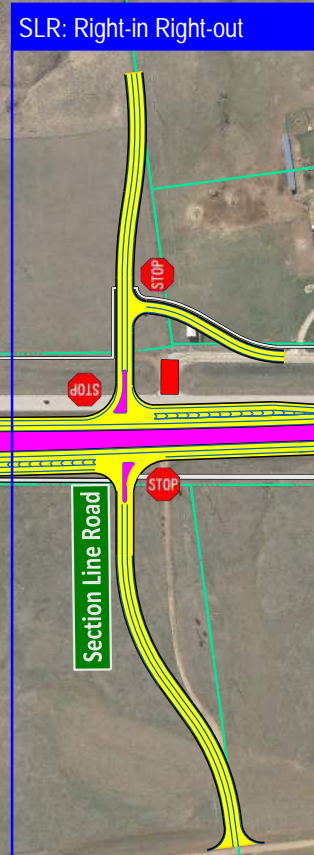
US16 & Fort Hays Drive (Fort Hays) Intersection Options

US16 & Section Line Road (SLR) Intersection Options

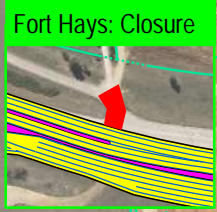
Refer to US16/US16B/Catron Blvd Intersection Sub-Area for further discussion of SPI consultant recommendation:



MMD RCI and MUT Intersection Options  
 A: Phased Approach - Open Unsignalized, Signalize when Warranted  
 B: Signalize at Opening (shown in figure)



Fort Hays: Right-in Right-out



Fort Hays Access road is applicable to all access options.

Fort Hays Access

Moon Meadows Drive

Sidewalk

Shared-use Path

Addison Avenue

Healing Way

Catron Boulevard

Signalized at Opening

# US16 Urban (South) Scenario 2

Concepts Carried Forward  
 Corridor: B (40' raised median) shifted east  
 Intersections: MMD-2-5, FH-1-2 SLR-1-4



US16 Corridor Urban Area - South of US16B/Catron Boulevard  
 Scenario 2: 4-Lane Divided (Shifted East) with Alternative Intersection Improvements  
 US16 Corridor Study

Figure

Rapid City, SD

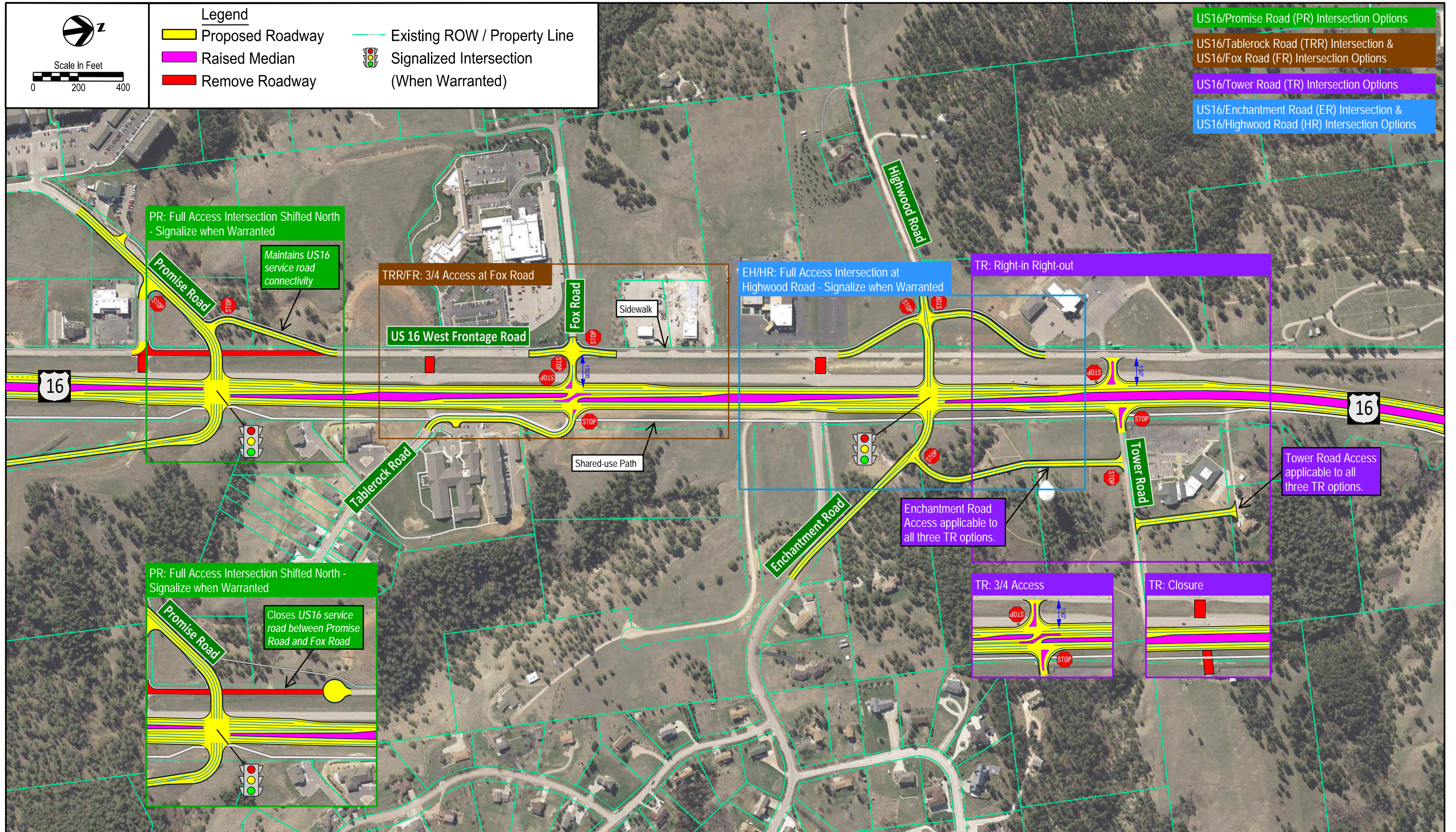


Scale in Feet  
0 200 400

Legend

- Proposed Roadway
- Raised Median
- Remove Roadway
- Existing ROW / Property Line
- Signalized Intersection (When Warranted)

- US16/Promise Road (PR) Intersection Options
- US16/Tablerock Road (TRR) Intersection & US16/Fox Road (FR) Intersection Options
- US16/Tower Road (TR) Intersection Options
- US16/Enchantment Road (ER) Intersection & US16/Highwood Road (HR) Intersection Options



# US16 Urban (North) Scenario 1

Concepts Carried Forward  
Corridor: B (40' raised median) shifted east  
Intersections: PR-1-2, TRR-2, ER/HR-1



US16 Corridor Urban Area - North of US16B/Catron Boulevard  
Scenario 1: 4-Lane Divided (Shifted East) with Intersection Improvements  
US16 Corridor Study

Figure

Rapid City, SD

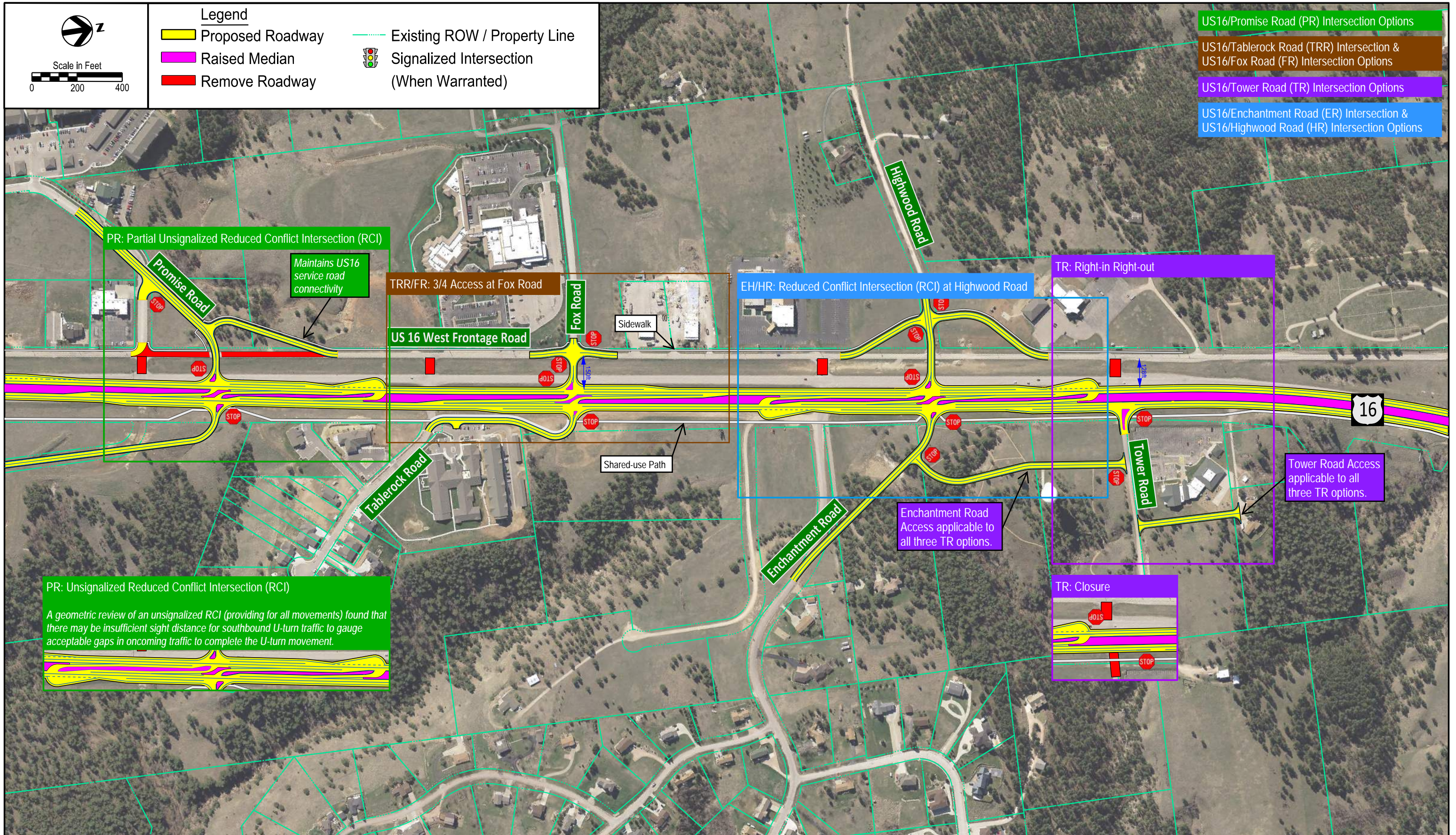


Scale in Feet  
0 200 400

Legend

- Proposed Roadway
- Raised Median
- Remove Roadway
- Existing ROW / Property Line
- Signalized Intersection (When Warranted)

- US16/Promise Road (PR) Intersection Options
- US16/Tablerock Road (TRR) Intersection & US16/Fox Road (FR) Intersection Options
- US16/Tower Road (TR) Intersection Options
- US16/Enchantment Road (ER) Intersection & US16/Highwood Road (HR) Intersection Options



PR: Partial Unsignalized Reduced Conflict Intersection (RCI)

Maintains US16 service road connectivity

TRR/FR: 3/4 Access at Fox Road

EH/HR: Reduced Conflict Intersection (RCI) at Highwood Road

TR: Right-in Right-out

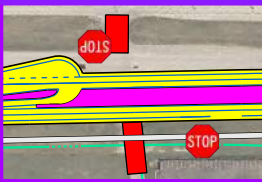
Tower Road Access applicable to all three TR options.

Enchantment Road Access applicable to all three TR options.

PR: Unsignalized Reduced Conflict Intersection (RCI)

A geometric review of an unsignalized RCI (providing for all movements) found that there may be insufficient sight distance for southbound U-turn traffic to gauge acceptable gaps in oncoming traffic to complete the U-turn movement.

TR: Closure

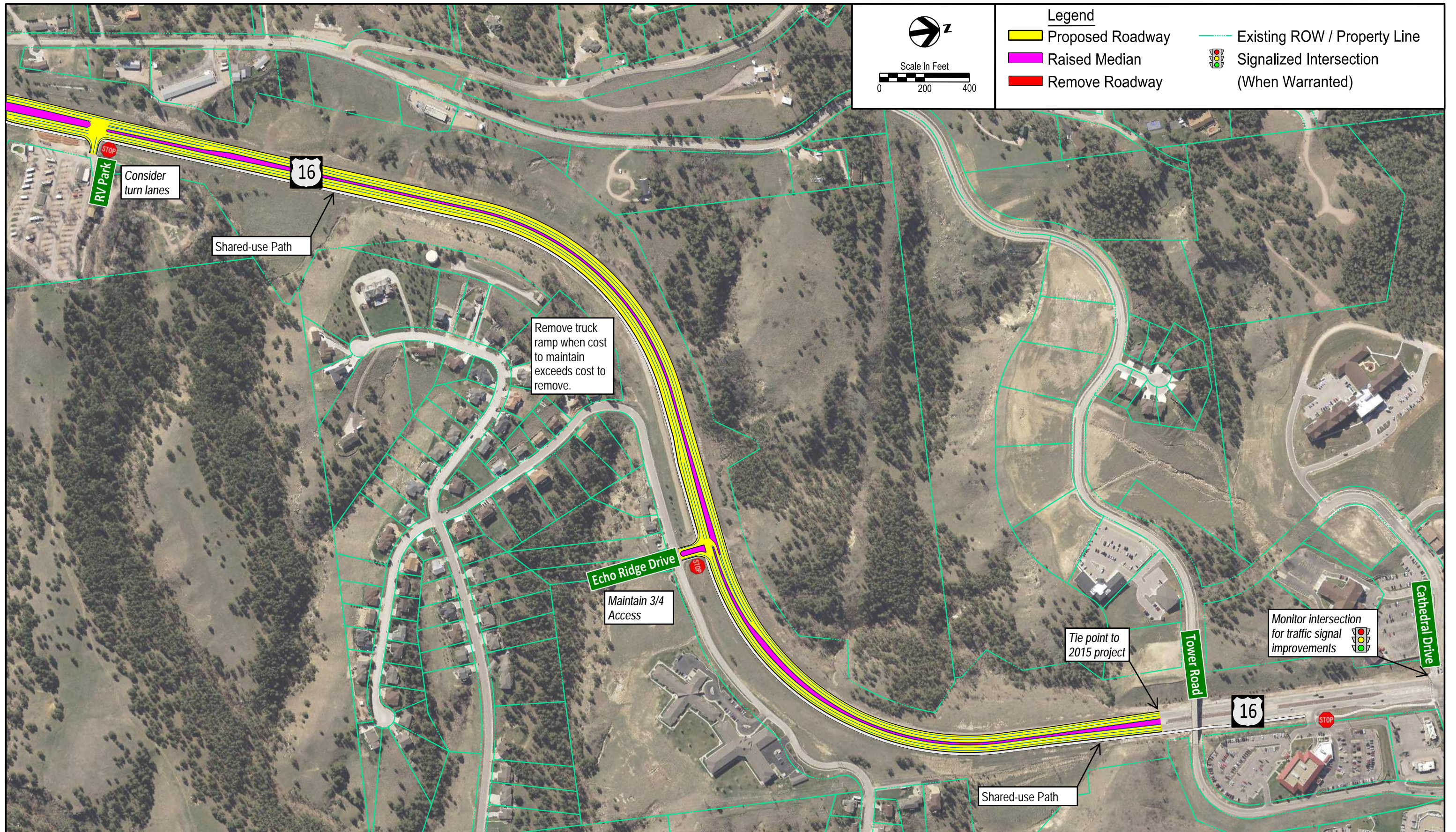


# US16 Urban (North) Scenario 2

Concepts Carried Forward  
Corridor: B (40' raised median) shifted east  
Intersections: PR-3-5, TRR/FR-2, ER/HR-2, TR-3-4



US16 Corridor Urban Area - North of US16B/Catron Boulevard  
Scenario 2: 4-Lane Divided (Shifted East) with Alternative Intersection Improvements  
US16 Corridor Study



US16 Urban (North)  
**Scenarios 1 & 2**

Concepts Carried Forward  
 Corridor: C (28' raised median) and D (12' raised median)  
 Intersections:



US16 Corridor Urban Area - North of US16B/Catron Boulevard  
 Scenarios 1 and 2: 4-Lane Divided with Intersection Improvements  
 US16 Corridor Study

Figure

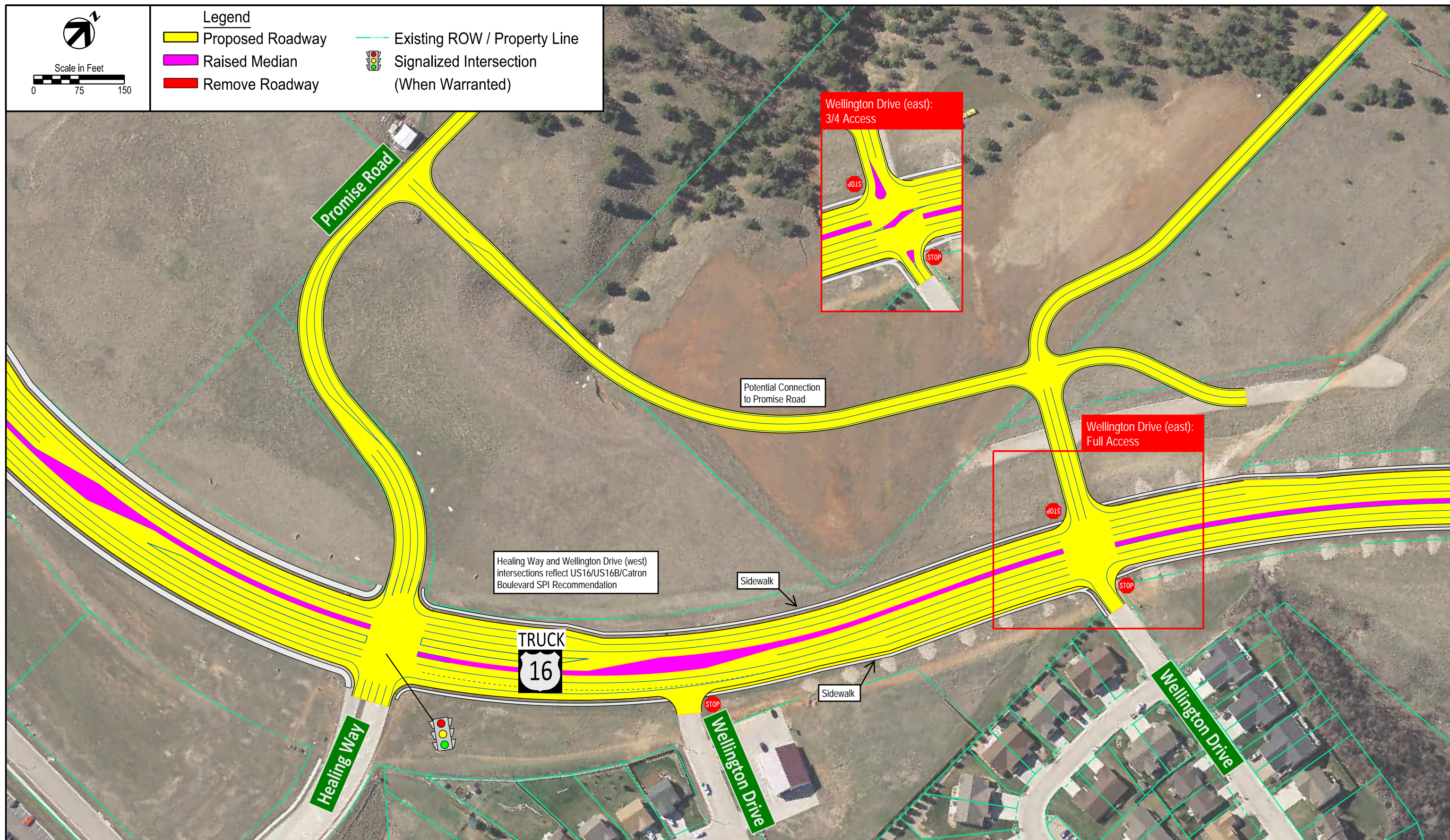
Rapid City, SD



Scale in Feet  
0 75 150

Legend

- Proposed Roadway
- Raised Median
- Remove Roadway
- Existing ROW / Property Line
- Signalized Intersection (When Warranted)



US16B/Catron Blvd  
**Scenario 1**

Concepts Carried Forward  
Corridor: US16/US16B/Catron Blvd SPI Recommendation  
Intersections: WDE-1 and WDE-2



US16B/Catron Boulevard Corridor  
Wellington Drive Intersection Options  
US16 Corridor Study

Figure

Rapid City, SD